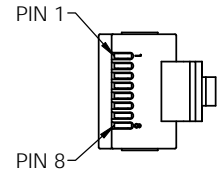
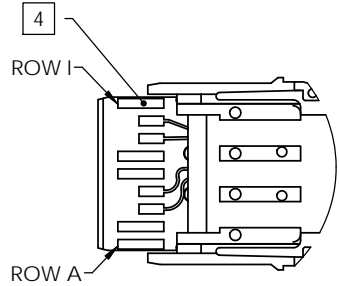
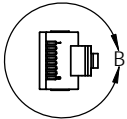
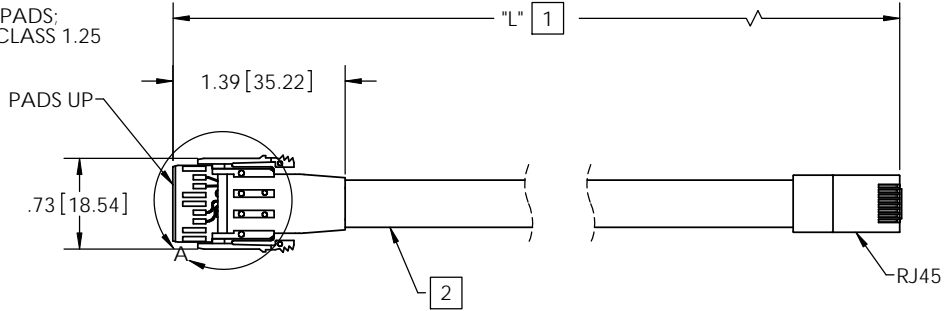
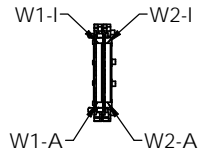


NOTES:

- 1 TOLERANCE TABLE
- 2 LABEL INCLUDES MERITEC; DATE CODE; AND PART NUMBER
- 3 CABLE 26 AWG, MERITEC P/N 700342, LSZH
- 4 50 MICRO-INCHES GOLD ON CARD EDGE PADS; PLATING PER ASTM B-488 TYPE 1, CODE C CLASS 1.25

REV.	ECO	DATE	DRAWN BY
A	2096-41830	12/7/2010	BAW
B	2096-41889	2/23/2011	BAW
C	2096-41937	4/14/2011	BAW

"L" LENGTH	TOLERANCE
UNDER 36" (915mm)	±0.5" (13mm)
36" - 120" (915mm - 3050mm)	±1.0" (25mm)
120" -240" (3050mm - 6100mm)	±2.0"(51mm)



DETAIL A  
SCALE 2 : 1

DETAIL B  
SCALE 2 : 1

PINOUT - VPX TO RJ45

P1 END (VPX)	P2 END (RJ45)	WIRE COLOR
POSITION ASSIGN	POSITION ASSIGN	
W1-A	PIN 1	ORANGE/WHITE
W1-B	PIN 2	ORANGE
W1-C	NO CONNECT	
W1-D	NO CONNECT	
W1-E	PIN 3	GREEN/WHITE
W1-F	PIN 6	GREEN
W1-G	NO CONNECT	
W1-H	NO CONNECT	
W1-I	NO CONNECT	
W2-A	NO CONNECT	
W2-B	NO CONNECT	
W2-C	PIN 4	BLUE
W2-D	PIN 5	BLUE/WHITE
W2-E	NO CONNECT	
W2-F	NO CONNECT	
W2-G	PIN 7	BROWN/WHITE
W2-H	PIN 8	BROWN
W2-I	NO CONNECT	

MERITEC P/N	"L"
98141OTR342-012	12"
98141OTR342-018	18"
98141OTR342-024	24"

**CONFIDENTIAL AND PROPRIETARY NOTICE**  
 This document and the information contained in it are confidential property of Meritec. The document and information are provided to you for your review and evaluation and must not be furnished or disclosed to other without prior written consent by an authorized representative of Meritec.

©Meritec 2010  
 All rights reserved.

UNLESS OTHERWISE NOTED  
 DIMENSION ARE IN METRIC/ INCHES  
 .XX .XXX .XXXX  
 \* I \* I \* I

ANGLES ± I	FINISH:
DRAWN: BWALTERS	DATE: 12/7/2010
MODIFIED: BWALTERS	DATE: 4/14/2011
RELEASED:	DATE:
SCALE: NONE	SCALE: NONE



TITLE <b>VPX TO RJ45 ODD WAFER THIN PIPE</b>	
PROJECT NUMBER 2096	SHEET 1 OF 1
DOCUMENT NUMBER 2096-0143923	REV C