

NOTES:

1 TOLERANCE TABLE

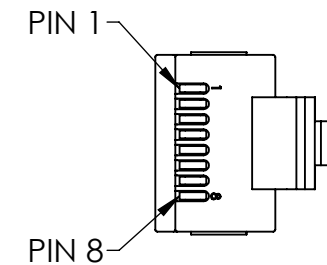
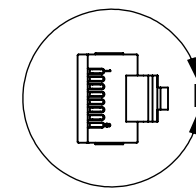
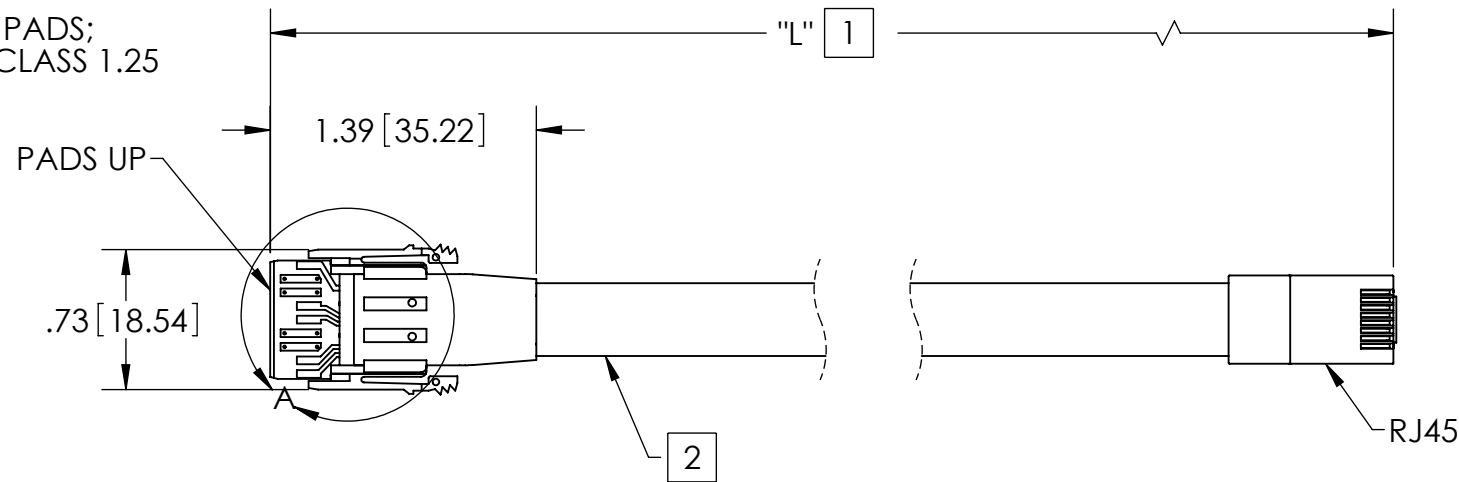
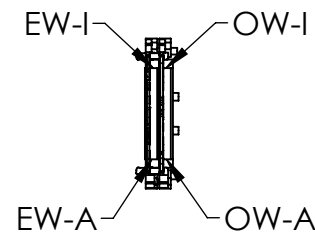
"L" LENGTH	TOLERANCE
UNDER 36" (915mm)	±0.5" (13mm)
36" - 120" (915mm - 3050mm)	±1.0" (25mm)
120" -240" (3050mm - 6100mm)	±2.0" (51mm)

2 LABEL INCLUDES MERITEC; DATE CODE; AND PART NUMBER

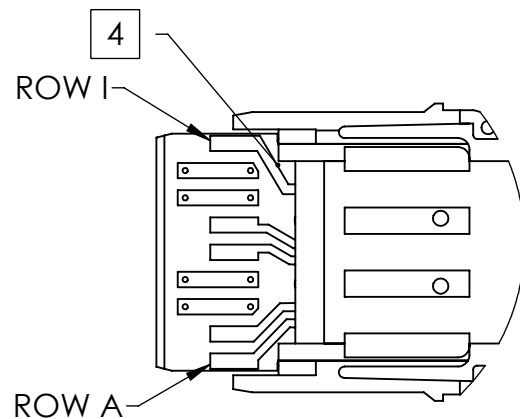
3 CABLE 26 AWG, MERITEC P/N 700342, LSZH

4 50 MICRO-INCHES GOLD ON CARD EDGE PADS; PLATING PER ASTM B-488 TYPE 1, CODE C CLASS 1.25

REV.	ECO	DATE	DRAWN BY
A	2096-43012	11/17/2014	CWB



DETAIL B
SCALE 2 : 1



DETAIL A
SCALE 2 : 1

PINOUT - VPX TO RJ45

P1 END (VPX)	P2 END (RJ45)	WIRE COLOR
POSITION ASSIGN	POSITION ASSIGN	
EVEN WAFER-A	NO CONNECT	
EVEN WAFER-B	NO CONNECT	
EVEN WAFER-C	PIN 4	BLUE
EVEN WAFER-D	PIN 5	BLUE/WHITE
EVEN WAFER-E	NO CONNECT	
EVEN WAFER-F	NO CONNECT	
EVEN WAFER-G	PIN 7	BROWN/WHITE
EVEN WAFER-H	PIN 8	BROWN
EVEN WAFER-I	NO CONNECT	
ODD WAFER-A	PIN 1	ORANGE/WHITE
ODD WAFER-B	PIN 2	ORANGE
ODD WAFER-C	NO CONNECT	
ODD WAFER-D	NO CONNECT	
ODD WAFER-E	PIN 3	GREEN/WHITE
ODD WAFER-F	PIN 6	GREEN
ODD WAFER-G	NO CONNECT	
ODD WAFER-H	NO CONNECT	
ODD WAFER-I	NO CONNECT	

MERITEC P/N	"L"
98141ETR342-012	12"
98141ETR342-018	18"
98141ETR342-024	24"

CONFIDENTIAL AND PROPRIETARY NOTICE
This document and the information contained in it are confidential property of Meritec. The document and information are provided to you for your review and evaluation and must not be furnished or disclosed to others without prior written consent by an authorized representative of Meritec.

©Meritec 2014
All rights reserved.

UNLESS OTHERWISE NOTED DIMENSION ARE IN [METRIC] / INCHES		
.XX	.XXX	.XXXX
± []	± []	± []
ANGLES ± []	FINISH:	
DRAWN: C.BAUMANN	DATE: 11/17/2014	
MODIFIED: C.BAUMANN	DATE: 11/17/2014	
RELEASED:	DATE:	



TITLE
**VPX TO RJ45
EVEN WAFER THIN PIPE**

PROJECT NUMBER
2096

DOCUMENT NUMBER
2096-0165317

SHEET
1 OF 1

REV
A

SCALE
NONE